

KSE100 Index			
Support	Resistance		
S1	119,965.00	R1	120,796.00
S2	119,640.00	R2	121,100.00
S3	119,200.00	R3	121,800.00
S4	118,880.00	R4	122,300.00

Indicator	Reading
14 - Day RSI	58.93
Stochastic Oscillator	67.80

Moving Avg.	Reading	Moving Avg.	Reading
10 - DMA	119,170.30	100 - DMA	115,093.20
30 - DMA	116,423.40	200 - DMA	103,537.50

Market at a Glance			
Open	119,129.51	Close	120,450.87
High	120,693.83	Change	1,573.07
Low	119,129.51	Volume(mn)	315.23

Index	Value	Change	Volume
All Share	75,226.61	767.87	578,163,611
KSE- 100	120,540.87	1,573.07	315,235,806
KSE- 30	36,584.01	439.42	86,097,698
KMI -30	180,267.98	1,790.58	124,677,885

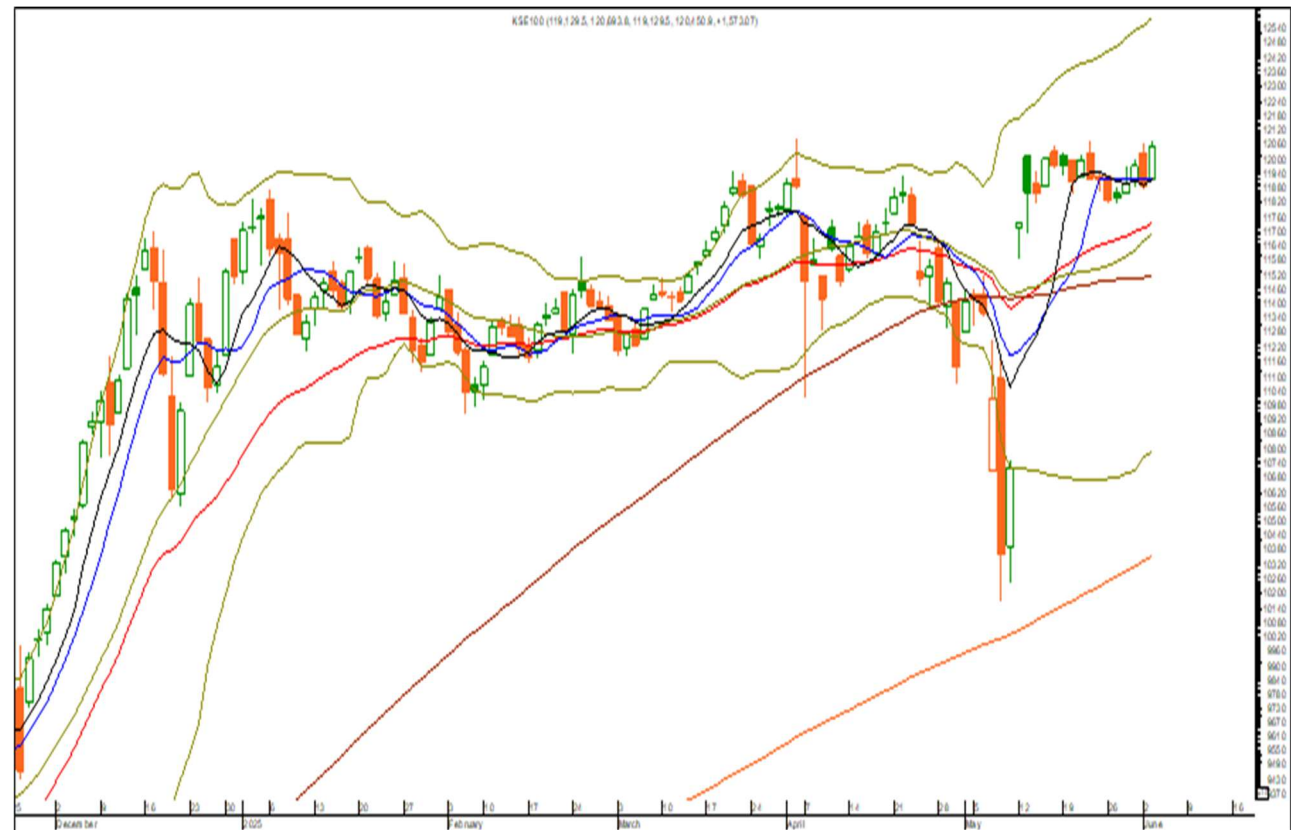
**AHL Technical**

D: +92 21 32460047

UAN: +92 21 111 245 111, Ext: 308

[technical@arifhabibltd.com](mailto:technical@arifhabibltd.com)
[www.arifhabibltd.com](http://www.arifhabibltd.com)

## Technical Analysis



**Strategy:** The KSE-100 has reached a record high, but clearing the intraday resistance levels at 120,699 and 120,796 remains critical. A decisive move above these points would confirm the continuation of the bullish trend, potentially driving the index toward the 121,100 to 121,800 zone.

The short-term outlook remains positive, targeting the 120,699 to 120,796 range. A breakout beyond 120,796 could open the path to the next target levels between 121,300 and 121,800. On the downside, immediate support is seen between 119,965 and 119,640, and a decline below 119,640 may signal weakness, possibly leading the index toward 119,200 – 118,880.

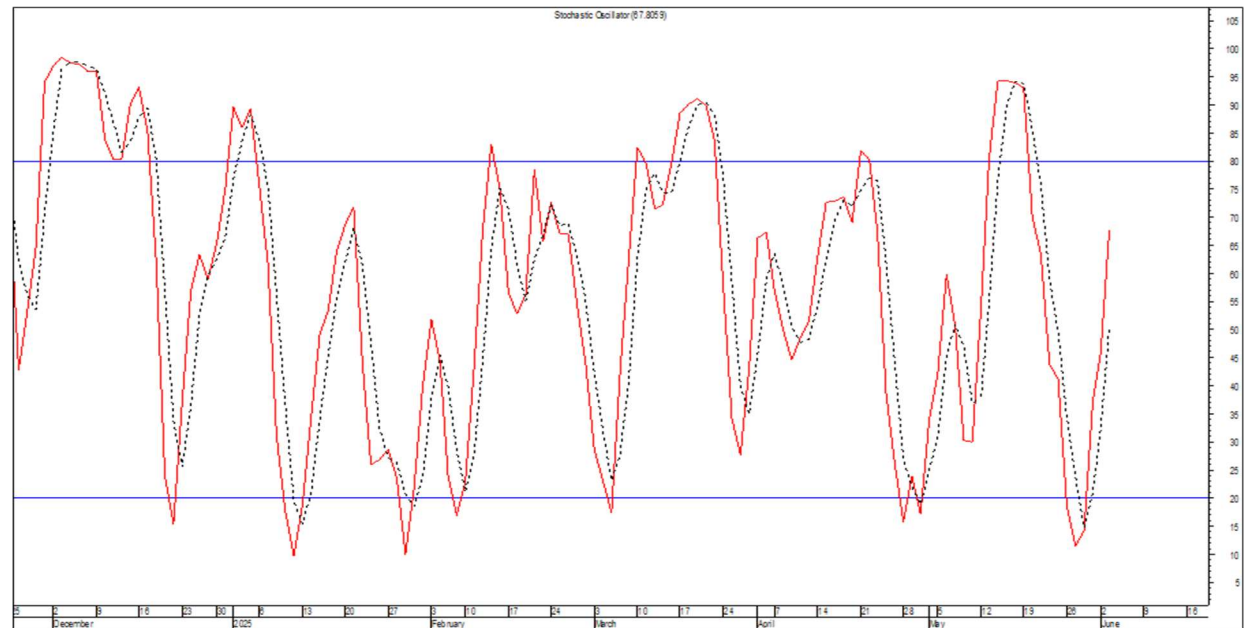
Traders are advised to manage risk below 116,900, with upside targets set at 120,796 – 121,100 in the near term, and 121,800 – 122,300 as the next potential levels.

Volume leader			
Symbol	Close	Change	Volume
KEL	5.32	0.23	144,646,561
FABL	53.77	4.89	26,656,029
ICIBL	2.35	0.04	25,541,103
FFL	16.19	0.33	24,373,619
KOSM	5.23	0.01	22,184,658
WTL	1.37	0.01	19,662,660
PTC	25.75	1.02	16,944,155
DCL	12.68	0.01	11,116,939
MLCF	76.87	2.10	10,931,044
HUBC	140.14	0.85	10,374,934

## 14-Day RSI



## STOCHASTIC OSCILLATORS



Symbol	Last Price	S1	Support S2	S3	R1	Resistance R2	R3	14 Days-RSI	10-DMA	30-DMA	100-DMA	200-DMA
KEL	5.32	5.19	5.10	5.00	5.46	5.57	5.70	60.48	5.14	4.54	4.55	4.60
FABL	53.77	52.90	52.50	51.80	54.50	55.00	55.75	82.71	48.76	47.87	48.96	48.66
FFL	16.19	16.05	15.89	15.60	16.45	16.65	16.90	59.75	15.68	15.10	15.58	13.25
KOSM	5.23	5.18	5.08	5.00	5.36	5.46	5.55	47.50	5.46	5.25	5.91	7.13
WTL	1.37	1.35	1.34	1.32	1.39	1.41	1.44	56.96	1.31	1.28	1.44	1.41
PTC	25.75	25.30	24.90	24.75	26.20	26.60	27.30	64.35	24.15	21.77	23.26	20.07
DCL	12.68	12.43	12.26	12.10	13.00	13.25	13.50	74.23	11.12	10.41	9.40	8.97
MLCF	76.87	76.10	75.66	75.20	77.40	78.50	79.20	59.89	75.79	71.65	57.62	48.16
HUBC	140.14	139.20	138.80	13.07	141.40	142.40	143.30	53.97	139.40	137.54	134.99	129.92
ASL	12.13	12.00	11.86	11.50	12.34	12.49	12.75	68.71	11.08	10.39	10.39	9.15

Source (s): PSX, AHL Technical

**Disclaimer:** This document has been prepared by Technical analysts at Arif Habib Limited (AHL). This document does not constitute an offer or solicitation for the purchase or sale of any security. This publication is intended only for distribution to the clients of the Company who are assumed to be reasonably sophisticated investors that understand the risks involved in investing in equity securities. The information contained herein is based upon publicly available data and sources believed to be reliable. While every care was taken to ensure accuracy and objectivity, AHL does not represent that it is accurate or complete and it should not be relied on as such. In particular, the report takes no account of the investment objectives, financial situation and particular needs of investors. The information given in this document is as of the date of this report and there can be no assurance that future results or events will be consistent with this information. This information is subject to change without any prior notice. AHL reserves the right to make modifications and alterations to this statement as may be required from time to time. However, AHL is under no obligation to update or keep the information current. AHL is committed to providing independent and transparent recommendation to its client and would be happy to provide any information in response to specific client queries. Past performance is not necessarily a guide to future performance. This document is provided for assistance only and is not intended to be and must not alone be taken as the basis for any investment decision. The user assumes the entire risk of any use made of this information. Each recipient of this document should make such investigation as it deems necessary to arrive at an independent evaluation of an investment in the securities of companies referred to in this document (including the merits and risks involved), and should consult his or her own advisors to determine the merits and risks of such investment. AHL or any of its affiliates shall not be in any way responsible for any loss or damage that may be arise to any person from any inadvertent error in the information contained in this report.