

KSE100 Index			
Support	Resistance		
S1	129,590.00	R1	130,795.00
S2	128,850.00	R2	132,000.00
S3	128,200.00	R3	132,600.00
S4	127,640.00	R4	133,230.00

Indicator	Reading
14 - Day RSI	70.34
Stochastic Oscillator	97.02

Moving Avg.	Reading	Moving Avg.	Reading
10 - DMA	123,179.80	100 - DMA	116,733.60
30 - DMA	121,463.60	200 - DMA	107,749.00

Market at a Glance			
Open	128,616.11	Close	130,344.03
High	130,545.94	Change	2,144.61
Low	128,616.11	Volume(mn)	345.80

Index	Value	Change	Volume
All Share	81,023.98	1,236.36	1,026,117,776
KSE- 100	130,344.03	2,144.61	345,794,612
KSE- 30	39,908.26	803.27	141,619,791
KMI -30	189,535.00	2,619.40	150,285,366

**AHL Technical**

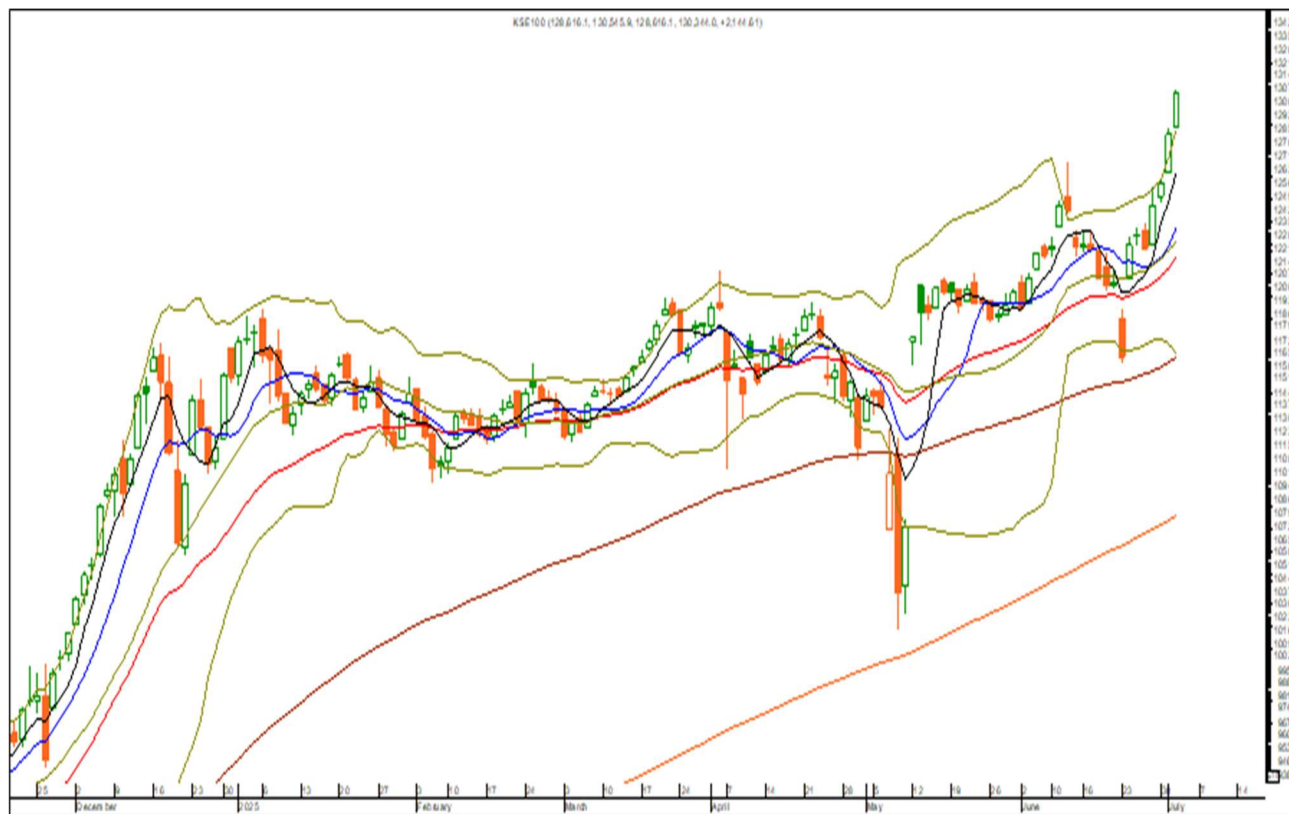
D: +92 21 32460047

UAN: +92 21 111 245 111, Ext: 308

technical@arifhabibltd.com

[www.arifhabibltd.com](http://www.arifhabibltd.com)

## Technical Analysis



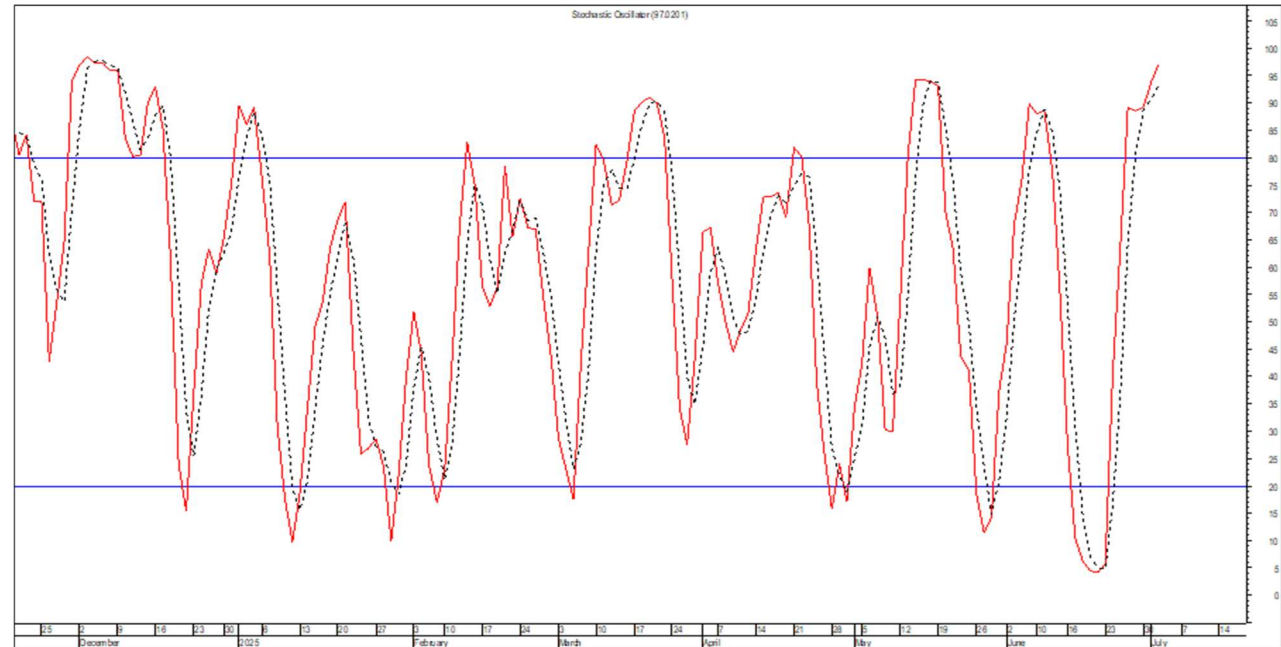
**Strategy:** On Wednesday, bullish momentum persisted as the KSE-100 index surged to a new all-time high of 130,344.02, gaining 2,144.61 points. The daily chart displayed a strong bullish structure, characterized by higher highs and higher lows, and ended with solid gains that reinforce the ongoing uptrend. The outlook remains positive, with the index eyeing the 130,795 to 132,000 range, and initial support seen around 129,590. A breakout above 132,000 could pave the way for further advances toward 132,600 and 133,230. Immediate support lies between 129,590 and 128,850, while a drop below 128,850 may indicate potential weakness, opening the door to a decline towards 128,200 – 127,640. With continued bullish sentiment expected in the upcoming session, the risk level has been adjusted to 125,500, while the focus remains on targets at 130,795 – 132,000, followed by 132,600 – 133,230.

Symbol	Volume leader		
	Close	Change	Volume
WTL	1.61	0.08	89,872,005
BOP	11.54	0.62	89,532,118
KOSM	6.12	(0.27)	46,349,499
SSGC	44.89	0.16	35,857,007
ICIBL	11.38	0.12	27,640,043
BML	4.98	(0.18)	25,474,977
FNEL	4.26	0.48	24,647,643
PMI	4.37	0.25	24,163,958
CPHL	92.28	6.61	23,206,388
SEARL	98.01	8.90	22,770,255

### 14-Day RSI



### STOCHASTIC OSCILLATORS



Symbol	Last Price	Support			Resistance			14 Days-RSI	10-DMA	30-DMA	100-DMA	200-DMA
		S1	S2	S3	R1	R2	R3					
WTL	1.61	1.58	1.55	1.53	1.65	1.68	1.75	61.34	1.48	1.41	1.38	1.42
BOP	11.54	11.38	11.10	10.96	11.85	12.04	12.23	71.51	10.38	10.18	10.88	9.26
KOSM	6.12	5.99	5.83	5.65	6.35	6.50	6.88	57.46	5.69	5.57	5.72	6.65
SSGC	44.89	44.30	43.65	43.25	45.65	46.45	46.80	58.16	42.56	39.46	37.18	31.45
ICIBL	11.38	11.21	11.00	10.80	11.65	11.85	12.10	78.52	9.46	5.60	2.66	2.13
BML	4.98	4.90	4.80	4.60	5.08	5.25	5.40	69.48	4.51	3.98	3.84	3.12
PMI	4.37	4.24	4.05	3.95	4.61	4.75	4.95	64.53	4.10	3.05	2.40	2.63
CPHL	92.28	91.40	90.80	89.70	93.90	94.90	96.00	63.37	83.76	85.28	89.70	7.00
SEARL	98.01	97.40	96.60	95.90	99.50	100.80	102.40	65.85	86.95	88.10	92.08	87.99
TPLP	9.81	9.70	9.62	9.50	9.94	10.09	10.26	57.98	9.50	9.38	10.11	10.09

Source (s): PSX, AHL Technical

**Disclaimer:** This document has been prepared by Technical analysts at Arif Habib Limited (AHL). This document does not constitute an offer or solicitation for the purchase or sale of any security. This publication is intended only for distribution to the clients of the Company who are assumed to be reasonably sophisticated investors that understand the risks involved in investing in equity securities. The information contained herein is based upon publicly available data and sources believed to be reliable. While every care was taken to ensure accuracy and objectivity, AHL does not represent that it is accurate or complete and it should not be relied on as such. In particular, the report takes no account of the investment objectives, financial situation and particular needs of investors. The information given in this document is as of the date of this report and there can be no assurance that future results or events will be consistent with this information. This information is subject to change without any prior notice. AHL reserves the right to make modifications and alterations to this statement as may be required from time to time. However, AHL is under no obligation to update or keep the information current. AHL is committed to providing independent and transparent recommendation to its client and would be happy to provide any information in response to specific client queries. Past performance is not necessarily a guide to future performance. This document is provided for assistance only and is not intended to be and must not alone be taken as the basis for any investment decision. The user assumes the entire risk of any use made of this information. Each recipient of this document should make such investigation as it deems necessary to arrive at an independent evaluation of an investment in the securities of companies referred to in this document (including the merits and risks involved), and should consult his or her own advisors to determine the merits and risks of such investment. AHL or any of its affiliates shall not be in any way responsible for any loss or damage that may be arise to any person from any inadvertent error in the information contained in this report.