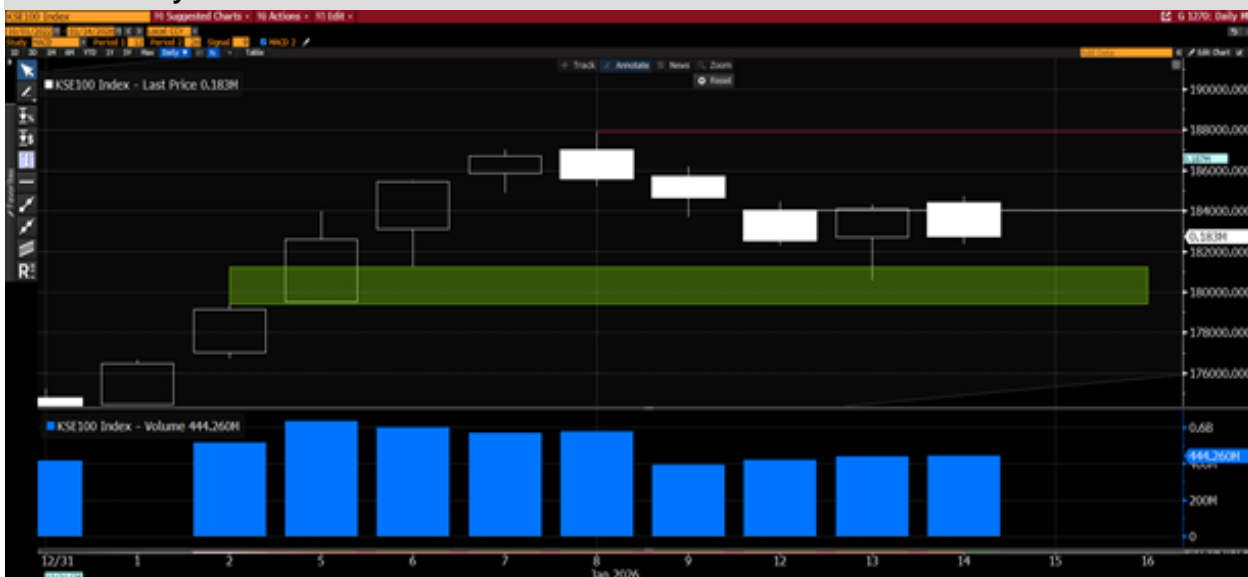


- Consolidation following Tuesday’s recovery with the KSE-100 continuing to hold key support @ 180k
- 18 shares rose while 82 fell with OGDC PA (+2.94%), PPL PA (+2.13%) and AKBL PA (+3.25%) contributing the most to index gains
- UBL PA (-2.05%), MCB PA (-2.68%) and FFC PA (-0.95%) were the biggest index drags
- “In the next couple of weeks we will hear, if all goes well, we will issue the inaugural Panda bond,” finance minister Muhammad Aurangzeb says at Pakistan Policy Dialogue event in Islamabad
- Pakistan signs an initial non-binding pact, known as memorandum of understanding, with SC Financial Technologies to explore stable coin USD1 for cross border transactions
- The GoP will seek bids from global cos within a month and appoint a financial adviser for Roosevelt hotel transaction by end-Feb
- Continue to anticipate an upside reversal against key support @ 180k

KSE-100 Daily Chart



Source: Bloomberg

14-Jan-26				Top Stocks	Trade Val. (USD mn)	Trade Vol. (mn Shares)	Price (PKR)	Change (%)
KSE100 Index	14-Jan-26		182,569.8	PPL	19.8	22.6	245.2	2.1
Change	Points %	-1,381.7	-0.75	OGDC	19.7	18.2	303.3	2.9
KSE100 Return (WTD)	Points %	-1,839.9	-1.00	NPL	14.7	42.6	96.5	7.9
KSE100 Return (MTD)	Points %	8,515.5	4.89	HUBC	13.6	16.8	226.0	-1.6
KSE100 Return (CY25TD)	Points %	8,515.5	4.89	NBP	12.6	13.1	269.7	-1.5
KSE All Market Cap	PKR bn		20,630.2	NCPL	9.2	36.7	70.2	10.0
KSE All Market Cap	USD bn		73.7	NML	6.1	8.4	202.8	-1.0
KSE All Traded Volume (Regular)	mn shares		1,034.1	PAEL	6.0	26.7	63.0	1.2
KSE All Traded Value (Regular)	PKR bn		66.0	PSO	5.9	3.5	464.9	-0.8
KSE All Traded Value (Regular)	USD mn		235.6	PTC	5.8	24.8	65.8	-5.6

Top Gainers	Price	Change	Change (%)	Index Contribution	Top Losers	Price	Change	Change (%)	Index Contribution
LOTCEM	31.6	1.55	5.2	20.0	PTC	65.8	(3.9)	-5.6	-79.0
ATLH	1,673.5	63.14	3.9	26.7	IBFL	267.6	(13.5)	-4.8	-7.2
AKBL	120.0	3.77	3.3	55.8	YOUW	5.5	(0.3)	-4.4	-0.7
OGDC	303.3	8.67	2.9	190.5	KOHC	105.0	(3.6)	-3.3	-27.9
PPL	245.2	5.11	2.1	116.5	SHFA	548.5	(16.3)	-2.9	-15.8

Source: PSX

Source: PSX

Disclaimer: This document has been prepared by Trading Desk at Arif Habib Limited (AHL). This document does not constitute an offer or solicitation for the purchase or sale of any security. This publication is intended only for distribution to the clients of the Company who are assumed to be reasonably sophisticated investors that understand the risks involved in investing in equity securities. The information contained herein is based upon publicly available data and sources believed to be reliable. While every care was taken to ensure accuracy and objectivity, AHL does not represent that it is accurate or complete and it should not be relied on as such. In particular, the report takes no account of the investment objectives, financial situation, and particular needs of investors. The information given in this document is as of the date of this report and there can be no assurance that future results or events will be consistent with this information. This information is subject to change without any prior notice. AHL reserves the right to make modifications and alterations to this statement as may be required from time to time. However, AHL is under no obligation to update or keep the information current. AHL is committed to providing independent and transparent recommendations to its client and would be happy to provide any information in response to specific client queries. Past performance is not necessarily a guide to future performance. This document is provided for assistance only and is not intended to be and must not alone be taken as the basis for any investment decision. The user assumes the entire risk of any use made of this information. Each recipient of this document should make such investigation as it deems necessary to arrive at an independent evaluation of an investment in the securities of companies referred to in this document (including the merits and risks involved) and should consult his or her advisors to determine the merits and risks of such investment. AHL or any of its affiliates shall not be in any way responsible for any loss or damage that may arise to any person from any inadvertent error in the information contained in this report.